

March 4, 2021

Gillian Barry  
Help Pet Shelters  
1090 Vermont Avenue, NW, Ste 800  
Washington, DC 20005

Dear Gillian,

**THANK YOU** for your donation of \$1,233.00 raised through your Help Pet Shelters campaign to encourage animal lovers to support vulnerable animals in their communities. I can't stress enough the impact you have made. Because of you, homeless and abandoned dogs, cats, puppies, kittens and critters will get the help they need and deserve.

We faced numerous challenges last year, such as a complete shut-down that had us sending over 100 animals to foster care, the temporary closure of the Thrift Store and cancelling all in-person events and activities to name but a few. Since then, most of our animals have returned from foster care and adoptions are taking place by appointment. The Thrift Store has reopened, and we are cautiously looking at the possibility of some sort of an in-person event at some point later this year.

**The Placer SPCA is the largest and most comprehensive animal welfare provider in Placer County.** As a critically needed not-for-profit organization, the Placer SPCA shelters up to 4,000 homeless animals annually and assists scores more through a variety of programs and services aimed at enhancing the lives of companion animals and supporting the human-animal bond.

We could not do our life-saving work without the compassion and generosity of supporters like you. Thank you for being a part of our vision: that one day every adoptable companion animal in Placer County will have a loving home.

Sincerely,

*Leilani Fratis*  
Leilani Fratis  
Chief Executive Officer

*Much appreciated!*



**Join our Circle of Hope Legacy Society by letting us know the Placer SPCA is in your Will, Trust or Estate Plan. To learn more, contact [funddevelopment@placerspca.org](mailto:funddevelopment@placerspca.org) or 916-872-6162.**

*The Placer SPCA, tax ID # 94-2607682, did not provide any goods and/or services in whole, or in part, for this contribution.*

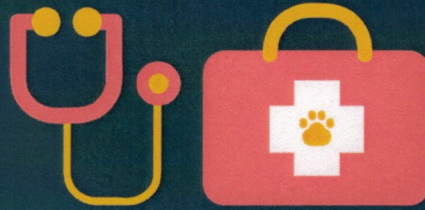


# Statistics & Highlights:

## PLACER SPCA'S 2020 AT A GLANCE



**1,435 animals**  
found their forever home.

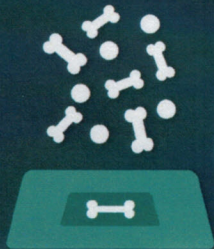


**591 animals**  
received lifesaving medical care through  
our Guardian Angel Program Fund.



**221 animals**  
transferred in from other shelters.

**701 students in Placer County**  
learned the importance of respect & compassion for  
all life through our Humane Education programs.



**258 boxes of treats**  
**2,680 cans of wet food**  
**15,700 lbs. of dry food**  
provided to families in need through  
our Pet Food Assistance Program.



**1,057**  
shelter animals received  
spay/neuter surgery  
before being adopted.

**10 families**  
received financial aid  
through our SOS Program.

**245**  
animals were altered  
through our Spay & Neuter  
Assistance Program.

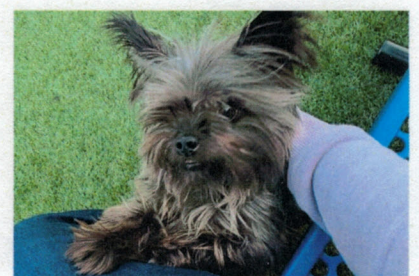


**1,056 animals**  
spent 26,176 hours in loving  
foster homes thanks to 183  
foster volunteers and their  
families!

**\$229,404.67**  
in revenue from the Placer SPCA  
Thrift Store with the help of

**103**  
volunteers who gave

**8,563 hours**  
by sorting, pricing, cashiering,  
cleaning and more!



**50,490 hours**  
were dedicated by 725  
volunteers at our Adoption  
& Education Center, in foster  
care, and at our Thrift Store.